



PICOLO & ASSOCIADOS, LTDA.

Engineering Solutions. Your Marine and Cargo Surveyors

OUR HISTORY

Our Company has been in operation for over 40 years, with the original office established in Fortaleza, Brazil, in 1981. Subsequently to Mr. Luis Kazuao Kumasaka (in memoriam) joining this office at Fortaleza, which is currently managed by Mr. Antonio Paulo Bastos, another office was opened in Rio de Janeiro, Brazil, where Mr. Salvador Picolo (Co-founder & CEO) took charge; and, as part of the network, a third office was opened in Santos in 1990, where Mr. Antonio Carlos Rodrigues joined our group. In 1992, Picolo & Associados, Ltda opened an associated office in Miami, Florida, where it attends the local North American market and demands.

Today, Picolo & Associados, Ltda is an employee-owned Company fully incorporated under the Brazilian laws. Our Company is involved with almost all types of surveys, investigations, salvage operations, wreck removals, and special engineering projects. The company acts mainly for the shipping market, mostly on behalf of Underwriters, Shipowners and Associations, Charterers or Cargo Interests. With its network of offices and collaborators throughout Brazil and United States, Picolo & Associados Ltda is able to cover several ports and locations at a moment's notice, and we are proud to inform that till today, no casualty was left unattended, no matter its location.



Technical
Experts ready
to help



Attendance in
a worldwide
basis



We are
available 24
hours a day



LOCATIONS

The group renders services on a worldwide basis to the shipping, energy and insurance community through offices located as follows:



RIO DE JANEIRO, RJ

Av. Rio Branco 45, suite 2412
Rio de Janeiro, RJ 20090-003 - Brazil
Tel: +55 21 2263 5751
picolo@picoloassociados.com



FORTALEZA, CE

Rua Osvaldo Cruz 1, suite 1407
Fortaleza, CE 60125-150 - Brazil
Tel: +55 85 3037 3927
picolo@picoloassociados.com



SANTOS, SP

Avenida Ana Costa 471, suite 708
Santos, SP 11060-003 - Brazil
Tel: +55 13 3219 1351
picolo@picoloassociados.com



PANAMA CITY, PA

Calle 50, Edificio Plaza 2000, piso 19
Panamá, Republica de Panamá
Tel: +1 305 799 2985
picolo@picoloassociados.com



MIAMI, FL

12240 SW 140th ST
Miami, FL 33186 - USA
Tel: +1 305 799 2985
picolo@picoloassociados.com



Visit us at www.picoloassociados.com



SURVEYORS' BACKGROUND

A quick summary of the background of our key surveyors is outlined below. Complete resumes are available upon request.

Marcus Vinicius Mello de Barros

- Mechanical Studies at Technical School of Resende Ramel, October 2015
- 1984 to 1987 Technical Assistant at Arena Pícolo Ltda, Rio de Janeiro
- 1988 to present at Pícolo & Associados, Ltda. as Technical Supervisor
- Maritime Damage Insurance Inspector License – Funenseg – Fundação Escola Nacional de Seguros - 2005

Antonio P. Bastos

- Naval Architect, B.Sc., graduated in 1985.
- During 1984 worked as trainee with Germanischer Lloyd.
- From 1985 to 1999 worked with Brazilian shipyards in the production, project, and commercial areas, including claims.
- From October 1999 to date, acting as Surveyor with our group

Cesar Gouveia

- Production Engineer, BSc, graduated – UVA – 2014
- Postgraduate in Environmental Science – UFRJ – 2009
- Marine Engineer graduated from Merchant Marine Academy in 1986
- From 1986 to 1989 served on board seagoing Brazilian flag vessels with Flumar – Transportes Marítimos e Fluviais S.A.
- From 1990 to 1997 worked as Quality Control Inspector and Guarantee Engineer at I.H.I. – Ishibras
- From 1998 to date acting as Surveyor with our Company

Antonio Carlos Rodrigues	Marcos Vitor Magalhães	Edilson Silva
<ul style="list-style-type: none"> • Naval Architect, B.Sc., graduated in 1978. • From 1979 to 1986 worked with Brazilian shipyards in the project and production areas • From 1986 to 1990 worked as operation and transportation manager of a Brazilian shipping company • From 1990 to date, acting as Surveyor and Partner of our group. 	<ul style="list-style-type: none"> • Master Mariner graduated from Merchant Marine Academy in 1977 • From 1977 to 1994 served on board seagoing Brazilian flag vessels with Companhia de Navegação Lloyd Brasileiro • From 1995 to date, acting as Surveyor and Partner of our Company 	<ul style="list-style-type: none"> • Oceanic and Naval Engineering Program (PENO) Post Graduation (Stricto Sensu) UFRJ / COPPE / Brazil, MSc - Attending • Naval Architect and Marine Engineer, BSc., graduated in 2008 • Locar • Pícolo e Associados, Ltda.

Salvador Pícolo	Marcos Pícolo
<ul style="list-style-type: none"> • Oceanic and Naval Engineering Program (PENO) Post Graduation, (Stricto Sensu) UFRJ / COPPE / Brazil, MSc. • Offshore Systems, (MSO), Post-Graduation, (Latu Sensu) UFRJ / COPPE / Brazil, • Offshore Floating Systems Engineering (ESFO) Post Graduation, (Latu Sensu) UFRJ / COPPE / Brazil, • Offshore Structures, Federal University of Rio de Janeiro / Brazil, 1983 • Mechanic Engineer, B.Sc., Santa Ursula University, Rio de Janeiro/Brazil, 1981 • Marine Engineer, Merchant Marine School, Rio de Janeiro/Brazil, 1972 • Naval Technician, Merchant Marine School, Rio de Janeiro/Brazil, 1972 • From 1973 to 1975 served as Trainee and Marine Engineer on board of Brazilian flag vessels, with Companhia de Navegação Lloyd Brasileiro. • From 1975 to 1977 worked with a Brazilian shipyard as Guarantee Engineer. • From 1977 to 1980 worked with oil field related crafts (rigs and ships) within Texaco. • From 1980 to date, acting as Surveyor and Partner of the group 	<ul style="list-style-type: none"> • B.Sc. in Naval Architecture and Marine Engineering May 2005 from the University of New Orleans • Graduate Studies in Engineering of Offshore Systems, LabECO – COPPE/UFRJ (in the Federal University of Rio de Janeiro) • CEFOR Academy Course, Class 2018 - 2019 • Worked at Bollinger Shipyard from 2002 to 2004, • Senior Engineer at the American Bureau of Shipping from 2005 to 2011, • Class Society Marine Surveyor from 2011 to 2013, • 2013 to 2014 worked at Aker Philadelphia Shipyard, • 2014 to present at Pícolo e Associados, Ltda.

MAIN ACTIVITIES

The main activities of our group are, to a great extent, related to the shipping area and oil field related equipment and crafts. However, we also attend the industrial market, when requested. Below is a list of the main activities carried out by our surveyors:

HULL & MACHINERY (H&M)

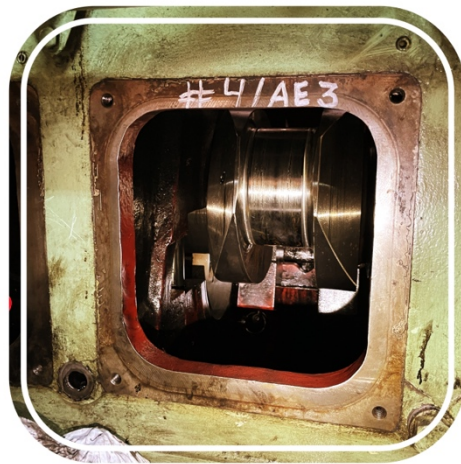
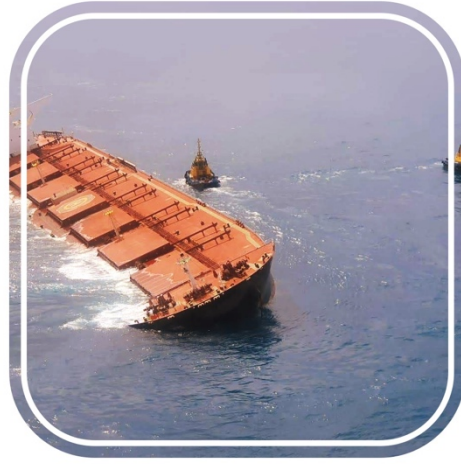
Hull and Machinery Insurance protects the insured vessel against physical damage caused by a peril of the sea or other covered perils.

As Marine Surveyors we are responsible for inspecting marine vessels, focusing on safety, quality and making sure the vessels comply with industry standards and specification requirements. They're also called upon to make repair recommendations and investigate accidents.

Our network of Marine Surveyors leads the way when it comes to Inspections and Investigations of Hull & Machinery Claims. With vast range of experience, various background, professional advice and knowledge, our experts support the international and local Marine and Offshore Markets with a full range of options, tailored specifically for each claim and incident.



H U L L & M A C H I N E R Y



We offer a comprehensive Hull & Machinery service to Ship Owners, Underwriters, Brokers, Law Firms and other related parties.

Typical hull and machinery scope of work will include:

- ✓ Total loss of the ship
- ✓ Damage to the ship, engines, and equipment
- ✓ Explosions and fires
- ✓ Groundings – damage to the ship, salvage of the ship and possible contribution in general average
- ✓ Collisions – damage sustained to the ship and sometimes also liability towards the other ship (RDC) (Check conditions)
- ✓ Striking other objects – damage inflicted to own ship and sometimes also liability towards the owners of the other object (FFO) (Check conditions)

LOSS OF HIRE (LOH)

To protect a loss of a charter hire or freight income many owners elect to purchase a loss of hire cover. Depending on the conditions, the cover may include slow steaming as a result of a physical damage to the ship. The cover may also include time lost due to deviation to a repair yard. Correct and accurate log

entries are therefore important in such situations.

As acting Insurance Surveyors, we take pride in constantly following up with repairs and in order to have a complete understanding of the situation and be able to transmit the necessary information to our Principals.



CARGO

The owners of cargo, which is to be transported by sea, usually cover their financial exposure against loss of, or damage to cargo for a declared value. The cargo insurer will compensate the owner of the cargo for any loss or damage to the cargo. Thereafter they may claim compensation for their loss from the carriers of the cargo.

Essential knowledge and skill are needed to prevent and assess the damage of goods transported by sea. That is why we believe our 40+ years of experience in this market speaks volume in comparison to the competitors. With qualified personnel onboard, we are ready for any cargo inspection, stowage, securing, assessment, surveys, and reporting, as needed.

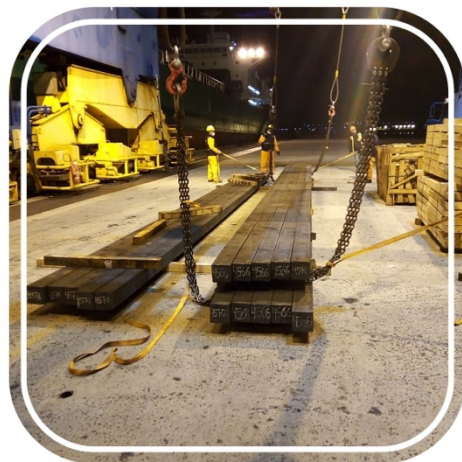
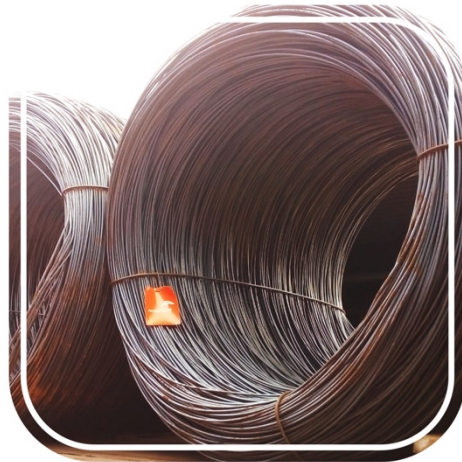
Some of the work that we are constantly involved with, includes:

CARGO SERVICES	<div><div><div>✓ Pre-loading Surveys of various types of cargoes</div><div>✓ Cargo loss, shortage, damage, delay or other responsibility occurring in relation to the carriage of cargo</div><div>✓ Bunker Surveys and Disputes</div><div>✓ Hull or Machinery Surveys on Behalf Cargo</div></div><div><div>✓ Cargo Risk Assessment</div><div>✓ Project Cargo</div><div>✓ Marine Warranty Surveys (MWS)</div><div>✓ Stowage and Lashing Plans and Approval</div><div>✓ Cargo Load Out & Stowage</div><div>✓ Lifting and Rigging Plan Approvals</div></div></div>
----------------	---

G R A I N S



S T E E L P R O D U C T S



C O N T A I N E R S



I R O N O R E



O T H E R C A R G O E S



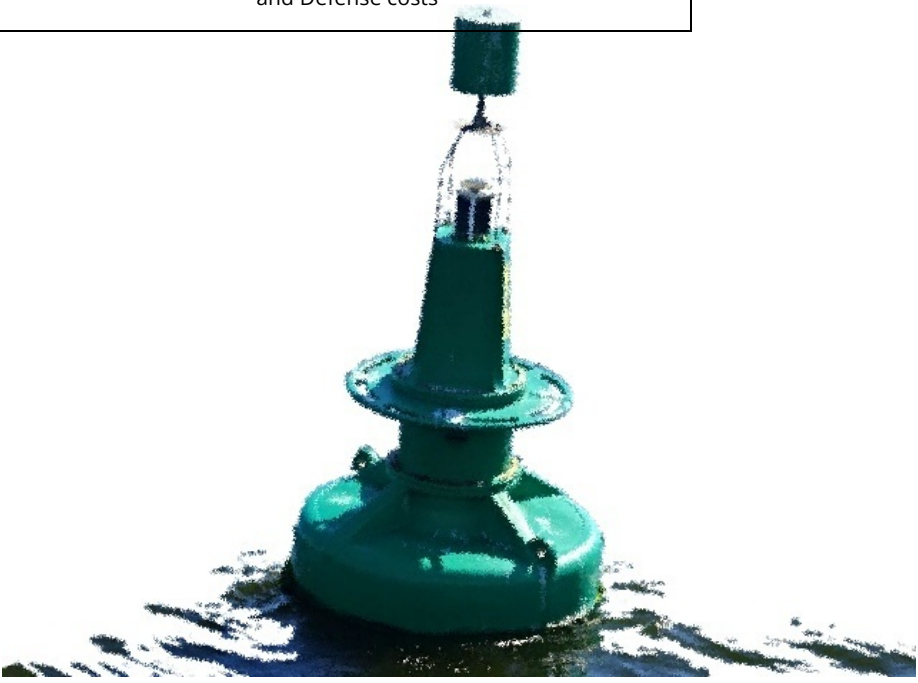
PROTECTION & INDEMNITY (P&I)

Protection and Indemnity insurance, or “P&I” as it is usually called, is a shipowner’s insurance cover for legal liabilities to third parties. “Third parties” are any person, apart from the shipowner himself, who may have a legal or contractual claim against the ship. P&I insurance is usually arranged by entering the ship in a mutual insurance association, usually referred to as a “Club”. In turn, this mutual insurance association provides risk pooling, information, and representation for its members. Shipowners are members of such Clubs. Unlike a marine insurance company, which reports to its shareholders, a P&I club reports only to its members.

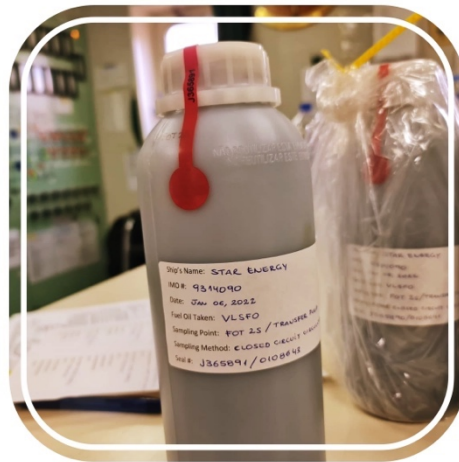
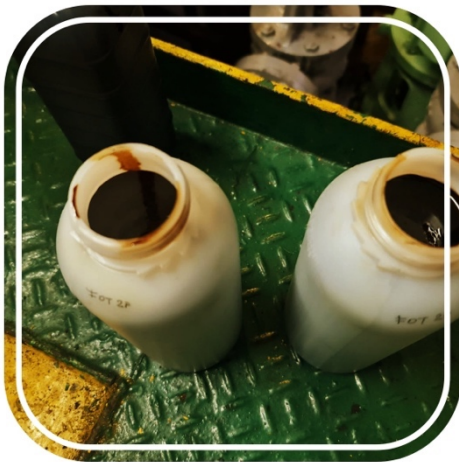
We at P&A, act as Surveyors for all of the International Group of P&I Clubs.

Subject to exclusions and conditions, the typical P&I policy will cover the following topics which our Group has a vast experience in successfully handling each one of them:

P&I SERVICES	<ul style="list-style-type: none">✓ Liability for Stowaways, deserters, and refugees✓ Liability for oil pollution and other types of pollution✓ Legal liability for wreck removal (if the ship sinks and is blocking free navigation for other vessels)✓ Loss of life,✓ Loss of and damage to cargo on board the vessel,✓ Damage to other floating objects not caused by collision,✓ Wreck removal costs,✓ Collision liability,✓ Damage to fixed objects (FFO),✓ Repatriation expense,	<ul style="list-style-type: none">✓ Damage to any other property, fines, and penalties,✓ Costs of resisting mutiny or misconduct,✓ Quarantine expenses,✓ Putting in costs,✓ Illness, injury and death of crew, passengers and other third parties on board✓ Fines✓ Salvage (certain aspects such as SCOPIC)✓ Costs incurred in investigating and defending liability✓ Costs incurred in inquiries and criminal proceedings✓ Sue and labor expenses✓ Cargo's proportion of general average, and Defense costs
-------------------------	---	--



P R O T E C T I O N & I N D E M N I T Y



NAVAL ARCHITECTURE & MARINE ENGINEERING

Marine engineers and naval architects design, build, and maintain ships, offshore structure and any other structure that touches water. As Engineers, we are also constantly involved with special, one of a kind, projects involving calculations and problem solving. Below are some of the areas our office is constantly involved with. No job is too big or too small, only thinking makes it so.

NAVAL ARCHITECTURE & MARINE ENGINEERING	<div>✓ Structural Modifications</div> <div>✓ Investigations</div> <div>✓ Salvage and Wreck Removal</div> <div>✓ Speed and Angle of Blow Surveys</div> <div>✓ Advice on Repairs and Costs</div> <div>✓ Preparation of Repair Specifications</div> <div>✓ Negotiation of Repair Accounts</div> <div>✓ Casualty Coordination</div> <div>✓ Advice on Damage Limitation and Mitigation of Loss</div>	<div>✓ Risk Assessment</div> <div>✓ Feasibility Studies</div> <div>✓ Project Cargo Stowage and Lashing Plans</div> <div>✓ Act as Owner's Rep During Repair/ Construction</div> <div>✓ Survey & Investigation of Onshore Structures</div> <div>✓ Onshore Insurance Market</div> <div>✓ Marine & Engineering Consultancy</div>
---	---	--

OFFSHORE & ENERGY	<div>✓ Oil & Gas Industry (Offshore and Onshore Crafts and Equipment)</div> <div>✓ Marine Warranty Surveying</div> <div>✓ Offshore Decommissioning & Cessation</div> <div>✓ Rig Moving</div> <div>✓ Marine Operations Support</div> <div>✓ Offshore Engineering Consultancy</div>	<div>✓ Vessel Inspections Support</div> <div>✓ Risk, Safety & Environment</div> <div>✓ Mooring Approval</div> <div>✓ Certified Auditors - Flag Inspections</div> <div>✓ Independent Survey and Inspections</div> <div>✓ Damage Surveys</div>
-------------------	---	--



REFERENCES

References about our Group can be obtained with the following Associations, Underwriters and/or P&I Clubs



Dronning Eufemias gate 6, 0191
Oslo, Norway
t: +47 37 01 91 00
Mr. Karl Muhlbradt
Mr. Atle Nordbø
Mr. Helge Stian Ødegaard



Olav Kyrresgate 11 NO-5014
Bergen, Norway
t: +47 55 55 95 00
Mr. Aage Solberg
Mr. Jostein Egeland
Mr. Anders Nordvik,
Mrs. Anne Systad



Rådhusgaten 27 0158
Oslo, Norway
t: +47 23 21 36 50
Mrs. Margrete A. Nordahl
Mr. Einar Sandbakken



Avenida Das Nações Unidas,
Nº 14.261 – 21º andar
Vila Gertrudes,
São Paulo, SP 04794-000
t: +55 11 5111 2314
Mr. Fabio Zanchi



Rua São Bento, 18 – 18º andar
Rio de Janeiro, RJ 20090-010
Brasil
t +55.21.2169-7333
Mrs. Tânia Porto



Av. Almirante Barroso, 81
Centro, Rio de Janeiro/RJ
20031-004
Tel +55 11 3585 3633
Eduardo Dias



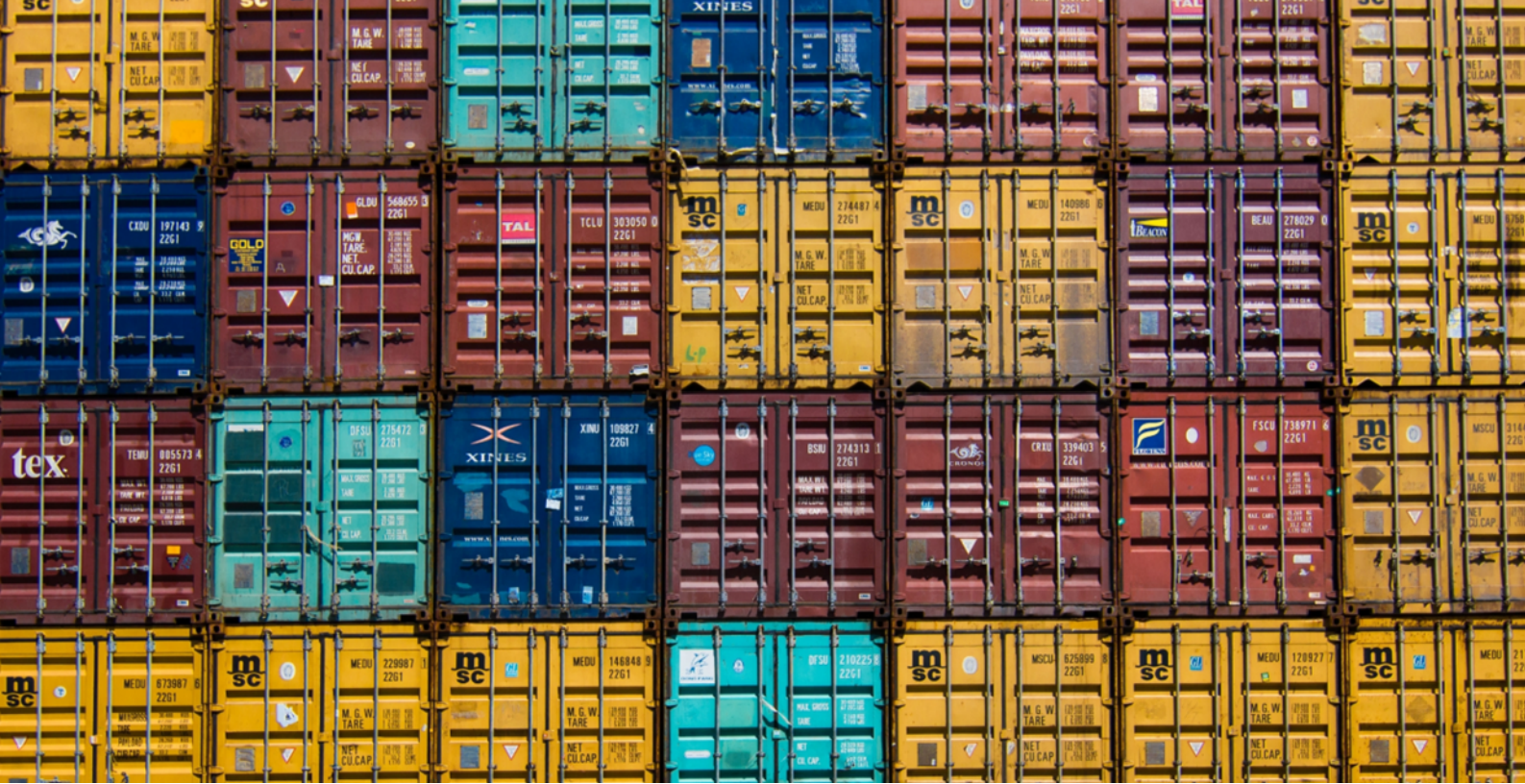
80 Maiden Lane, Suite 302
New York, NY 10038
USA
T +1 212 269 8220
Mr. William Richards



Elbchaussee 370
22609 Hamburg Germany
Mr. Tom J. Sommerwerck
Mrs. Claudia Burger
Mrs. Britta Winkler

AND MANY OTHERS...

- Additional references from other Underwriters and/or P&I Clubs are available upon request.



GENERAL

Our Companies are duly incorporated within either Brazilian or American laws, registered with all pertinent government agencies, including the Engineering Council and the Partners and Surveyors are affiliated with the following Entities:



Please visit us at www.picoloassociados.com for additional details.